

# PITBULL CRANES

CRANES & HYDRAULICS



## VISION

Cranes & Hydraulics will be a key role player in the hydraulic service industry. The Pitbull Crane will be internationally acclaimed and exported.

## MISSION

Cranes & Hydraulics provides appropriate high value services and solutions for:

Hydraulic Systems

Systems Design

Service Exchange

Component and Machine Overhauls

Manufacturing of Components

Pitbull Crane Exports

# Cranes & Hydraulics



We offer reliable solutions for weighty problems...



PITBULL 350:  
3.5 t/m Crane

PITBULL 750:  
7.5 t/m Crane

**Overview**





# PITBULL 350

Hose failure valves on cylinders. Main relief. Port relief valves per function.

Max 8 weeks delivery from date of order.

12 month Warranty on all structural and hydraulic components.

Optional Manual/Hydraulic outriggers manufactured to specification

- Lifting Moment: 3.5 ton metre
- Weight of Unit: 580kg
- Maximum Extension: 4.610m
- Hydraulic telescopic Extension: 2.000m – 3,350m
- Manual Extension: 3.350m – 4.610m
- Height in folded Position: 0.940m
- Operating Pressure: 11 mpa
- Slewing angle: 360 deg
- Recommended Oil Flow: 10 – 15 lpm
- Lifting Capacity:
  - 1750kg – 2.000m
  - 1100kg – 3.350m
  - 785kg - 4.610m

## PITBULL 350 Specifications





Structurally robust, the PITBULL 350 is the most compact and lightweight crane available on the market, weighing only 580kg



The height in the folded position measures 940mm. Fully retracted, the PITBULL will lift 1750kg



Fully extended at a distance of 4610mm, the PITBULL will lift 785kg's. Effectively, this classifies the PITBULL as a 3.5 ton metre crane



Applications for the PITBULL are unlimited, especially where restricted space and confined areas pose a problem

## PITBULL 350 Features and Benefits





Specific attention was given to safety and productivity in the design and development of the PITBULL



Successfully mounted on tractors, trailers, utility vehicles and LHDs above and below ground



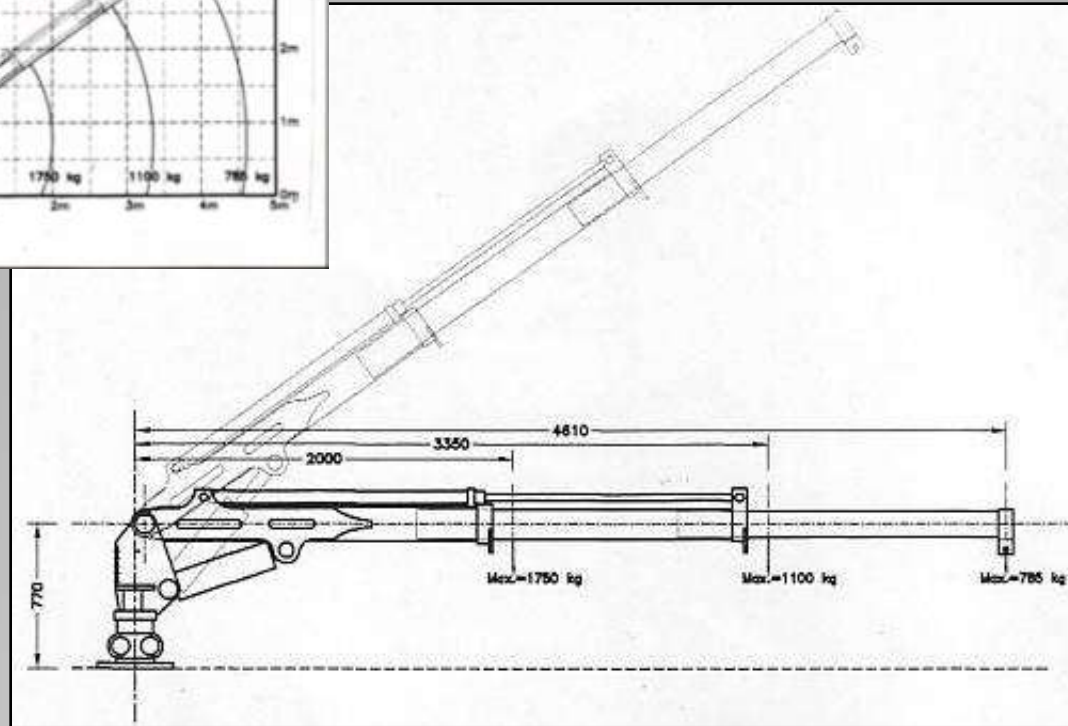
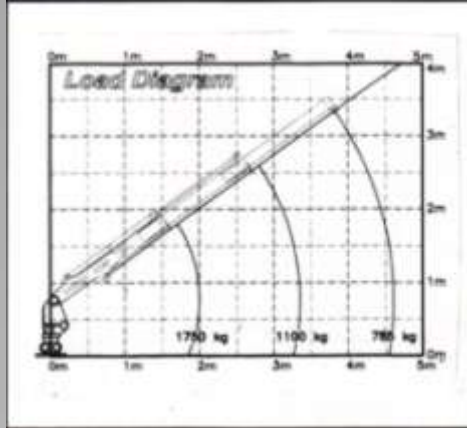
Cranes & Hydraulics has been manufacturing special application cranes for more than a decade



Dedication to quality, safety, increased productivity and innovation is our commitment and your guarantee

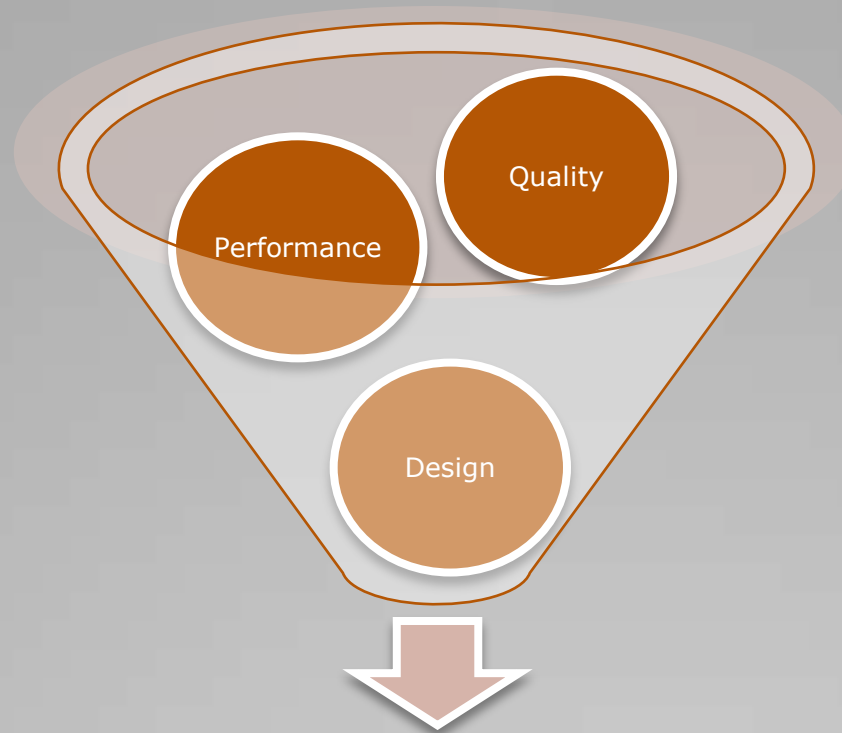
## PITBULL 350 Features and Benefits





# Load Diagram: PITBULL 350





At Cranes & Hydraulics, our focus is on ensuring the highest quality standards of safety, performance, versatility and ease of use. Our products are custom designed to meet the specific needs of our clients.

As a service provider in a highly skilled profession it is essential to guarantee a first class product/service to our valued clients. We have the necessary facilities to test all items manufactured, repaired and/or supplied to our clients. A perfect indicator to substantiate our quality guarantee is our warranty claim percentage which is less than 0.25%.

# Quality Guaranteed





**PITBULL 750**

High operational speed; Precision

User friendly proportionate controls; Utmost Safety

Designed to operate with a large range of accessories

Compact and easy to fold

- Hydraulic Outreach: 5m
- Hydraulic Boom Extension: 1.7m
- Pump Capacity: 30 l/pm
- Working Pressure: 24 mpa
- Slewing Speed: 22° /s
- Oil tank Volume: 45 litres
- Slewing angle: 360°
- Weight (complete unit): 1142kg
- Lifting Capacity:
  - 1.7m / 3800kg
  - 2.4m / 2800kg
  - 3.5m / 1980kg
  - 5.0m / 1400kg

## PITBULL 750 Specifications





The PITBULL 750 is manufactured in accordance with the requirements of International DIN 15018 Standards



Fatigue tested to category HIB3 – with a 5:1 Safety Factor



Painted with high gloss automotive finish giving protection in marine environments and high corrosion conditions



Excellent parts availability at low prices throughout South Africa

## PITBULL 750 Features and Benefits





Low pressure system; Main relief valve to prevent overloading; Port relief valves to prevent overloading of individual cylinders



Constant flow valves to control load lowering; Cushion valves to dampen shock loading of structure and hydraulic system



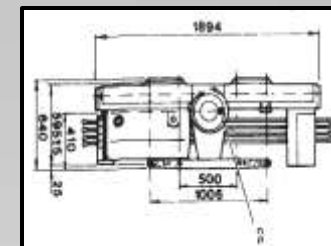
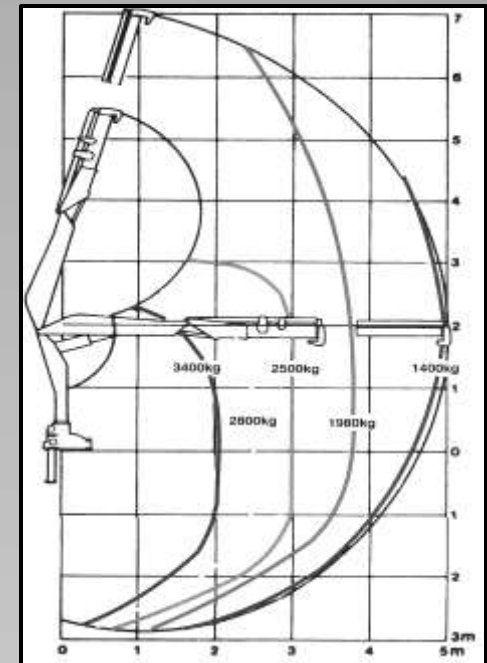
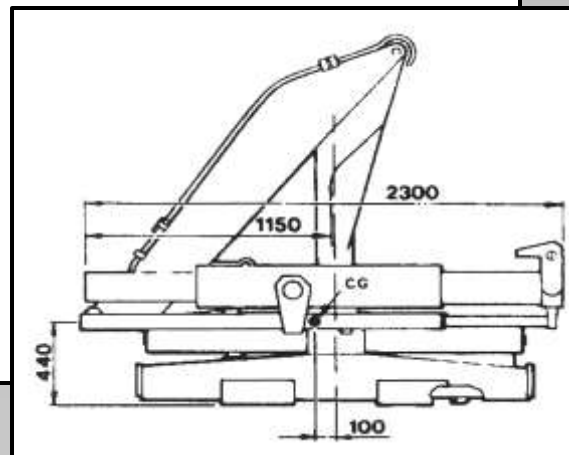
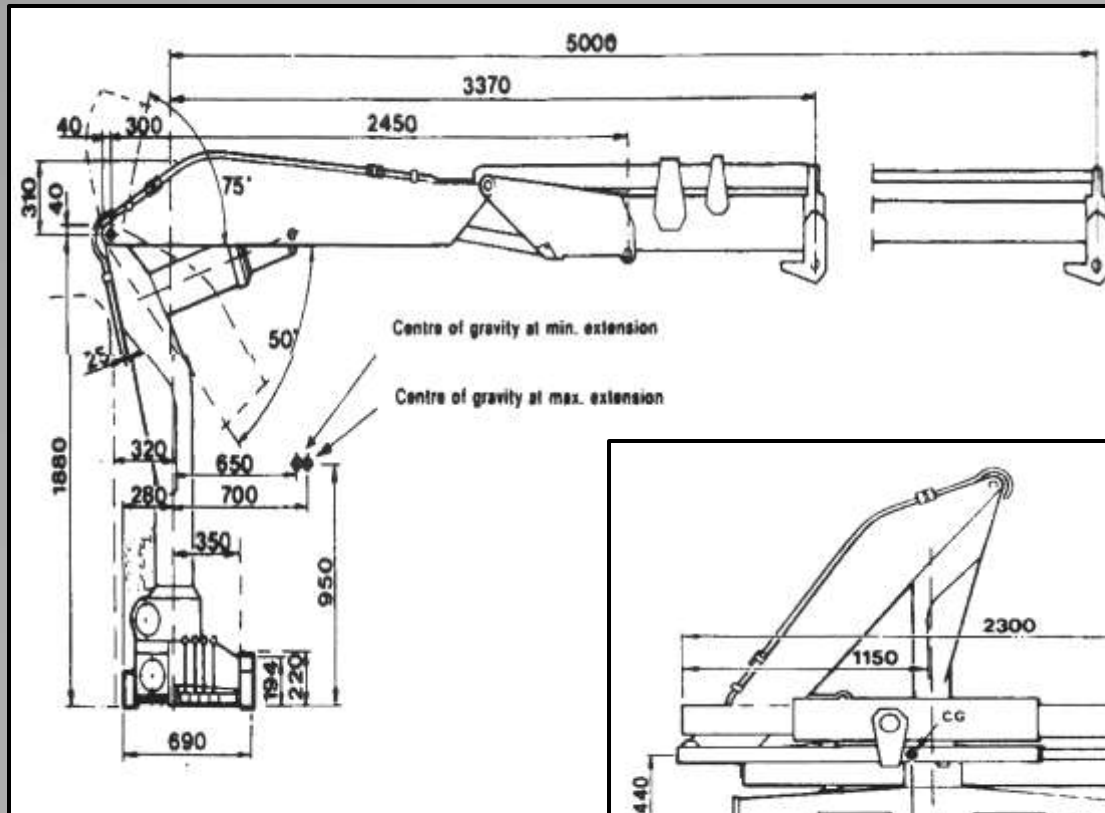
Velocity check valves on all lift cylinders to prevent load dropping in the event of hose failure; Anti-cavitation valves to prevent load running ahead of oil supply



Manual lock valves to ensure outriggers maintain stability ; Load hook fitted with safety catch

## PITBULL 750 Features and Benefits





# Diagrams: PITBULL 750





# 350 Photo Gallery





# 750 Photo Gallery



Vryheid Cranes CC t/a

## Cranes & Hydraulics

36 Stretch Crescent

P.O. Box 1092

Vryheid – 3100

KZN – South Africa

Telephone: +27 (0)34 – 981 3710 / 1

Facsimile: +27 (0)34 – 980 9679

Fax2E-mail: +27 (0)86 – 612 0150

## Our Offices





## Contact Us

- Rob Milne: +27 (0)82 491 0660
- Jack Gryffenberg: +27 (0)82 567 6761
- Sias Meyer: +27 (0)82 892 0843
- Manie Els: +27 (0)82 324 7997



## Contact our Offices

- Telephone: +27 (0)34 981 3710
- Fax: +27 (0)34 980 9679
- Fax2Email: +27 (0)86 612 0150
- Fax2Email: +27 (0)86 669 0576



## E-mail Addresses

- Pitbull: pitbull@cranes.co.za
- Marketing: reg@cranes.co.za
- Admin: vch@cranes.co.za
- General: info@cranes.co.za



## Office Address

Vryheid Cranes CC t/a Cranes & Hydraulics  
36 Stretch Crescent – Vryheid – 3100 – KZN – South Africa  
P.O. Box 1092 – Vryheid – 3100 – KZN – South Africa

# Contact Information

[www.cranes.co.za](http://www.cranes.co.za)

